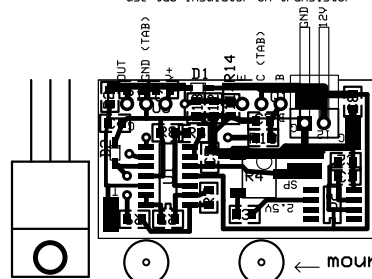
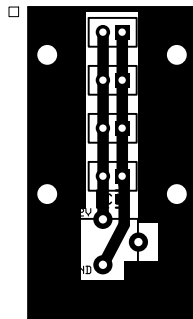


The below PCB fixes the errors of the PCB to the right.

tempmini\_3.pcb  
6/7/22

use tab insulator on transistor



Transistor: TIP102G  
Voltage Ref: MAX6225BCSA+T  
OP-AMP: MAX44243ASD+  
~~Power Jack: PJ-102AH~~  
Trimmer: 84WR10KLF  
Wall Wart: GS15U-3P1J  
Diodes: 1N914BWS BZT52C5V1S RRG

← mounting screws

Transistor LM35  
mirror when printing

Built two like this with jumpers on R9 and D1 to match PCB to the left. The pot is also backwards (turn CCW to inc temp).

tempmini\_2.pcb  
6/2/22

use tab insulator on TIP

